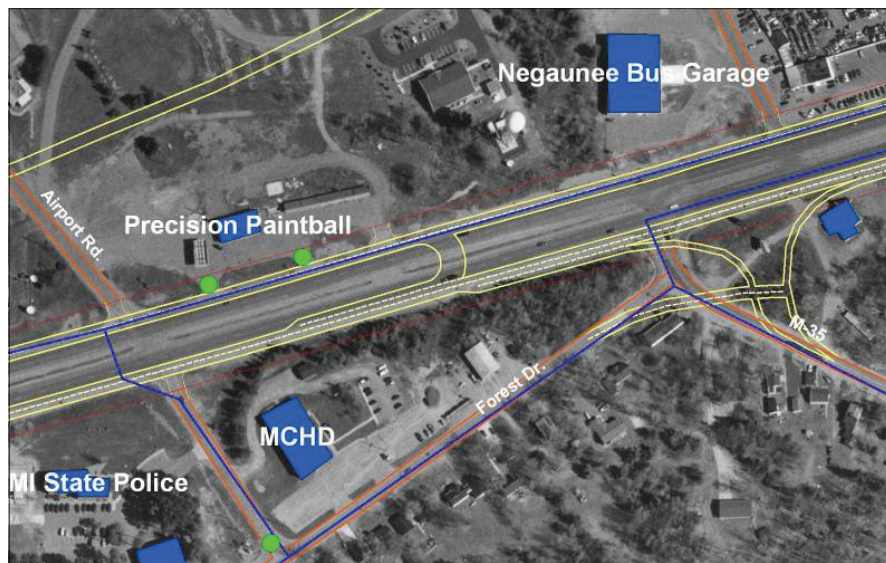




ACCESS MASTER PLAN UTILIZING GIS

NEGAUNEE AND CHOCOLAY TOWNSHIPS, MICHIGAN



Negaunee Township



Chocolay Township

In the last few years the urban areas near Marquette, Michigan have seen significant growth. As a result of traffic-related safety problems becoming more commonplace, the Michigan Department of Transportation has created funding programs to study traffic-related issues in growth areas. The US-41/M-28 corridor in Chocolay Township and the U.S. 41/M-28 corridor in Negaunee Township are among those areas that have been targeted and received funding.

To assist in developing access management plans both communities retained UPEA. The company's professionals are certified by MDOT to design access management plans. A key component of this project was the utilization of Geographic Information System (GIS) to analyze crash data to learn if there were problem areas (the study found that there were several) and then to formulate a list recommendations that would allow traffic to flow safer.

Based, in part, on UPEA recommendations, Chocolay and Negaunee townships have both adopted a series of controls for future development that will improve traffic safety and preserve highway capacity.